



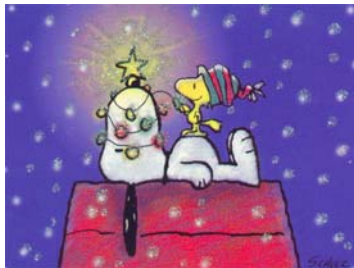
December 12, 2011

Hello Terry!

Happy Holidays! Here at **Platinum Dental Inc.**, we wish you all the best this holiday season.

In this issue: **Christmas time;** Dental Insurance News; **The Mouth;** **Patient of the Month;** End of year Special.

**Christmas Time is here!**



December has finally arrived. Amazing how this year has gone by so quickly. It wil be Christmas in no time. And to get that christmas spirit going we

### Refer a Friend



Thank you for showing your confidence in us through the referral of your friends!

[Click to send a referral email](#)

### Quick Links

[Visit our web site](#)

[Email Us](#)

[REQUEST AN APPOINTMENT](#)

need some good christmas music. Old or new. So when you are decorating your house and you get tired of listening to "Rocking Around the Christmas Tree", check out these old time favorites and some new christmas songs as well.

Fkulwp dv#0ljkw0Frøgsø|

Vdqwd#Ede | 0Wd|aru#z liw

Eαh#Fkulwp dv0Hqyl#Suhvch|

Fkulwp dv#G d|0Vkh# #K lp

Olwch#G uxp p hu#r | 0Idlk#K kō

Urfnlqj#durxqg#kch#Fkulwp dv#Wuhh0Euhggd#0hh

Wkh#Fkulwp dv#Vrqj0Q dw#N lqj#F rdh

Dqg#ru#xuh#khu#duh#z d|p ruh#Vr#hqr|#khp #00dgg#hyhu|wklqj#hoh#|rx#gr#r#  
 suhsduh#iru#Fhcheudw#dgg#hqr|#kvh#K rōgd|v1

### Dental Insurance News & Updates

You asked and we listened. We have become providers for more dental insurances to better serve your dental needs in these times. What does that exactly mean? It means that you save more and you can get your teeth fixed at the same time. For a complete listing of insurances [click here](#).

### The Mouth *oAn Early Warning System*



The mouth can act as a very effective early warning system. Problems in the mouth can signal trouble in other parts of the body. Saliva, like blood and urine, can be used to detect and measure many compounds in the body. Saliva collection has the advantage of being noninvasive. Saliva could potentially replace blood testing by allowing for diagnosis and monitoring of many diseases.

Recent research and studies point to associations between oral infections – primarily gum infections – and diabetes; heart disease; stroke; and preterm, low-weight births. To date, there is not enough evidence to conclude that oral infections cause these serious health problems by themselves alone or in association with other conditions such as smoking, drinking and diet as well.

Gum infections have been dubbed "the sixth complication of diabetes," because people with diabetes are more likely to have periodontal disease. Researchers are exploring a possible two-way connection between the conditions to see if treating gum disease improves diabetic control.

Recent studies also point to an increased risk of heart disease and stroke in people with gum infections; the risk increases with the severity of the oral infection.

Some studies have found that mothers of preterm, low birth weight infants tend to have more severe gum disease than mothers of normal birth weight babies.

When you look at these findings, you begin to see a pattern of gum disease and other medical problems. It is as if it acts as a gateway to let other bad things into your body! This is why your Regular dental check-ups are so important. Preventing gum disease or treating it in time before it gets worse is crucial to your overall well being.

-----  
Patient of the Month winner:

**Kyle Hagerty**



Congratulations **Kyle**, you're now holding the title of "Patient of the Month", so come by the office and pick up your Sonicare Toothbrush during business hours, you have 30 days to claim your prize.

Everyone that comes in for routine check-up cleaning receives an entry to the drawing. You can also get 2 more entries into the drawing by completing our online survey after your visit.

**And Remember...** your referrals earn you more chances to win.

[December Specials: Click Here!](#)

Have a great day!





*Platinum Dental Inc.*

**Platinum Dental Inc. | 555 South Rancho Santa Fe Road Suite 100 San Marcos, CA  
92078 | 760-510-9009**