



Platinum Dental Inc. Smile Times

February 10, 2011

Welcome Terry!

In this issue: **Valentine's Day fun facts**; **Nightguards**; **Monthly Raffle Winner**; Monthly specials.

It's **February** Heart Disease Awareness month...



Valentines Day ♥

Ooh love is in the air, and at every where you go. And we sure wish you a lovely Valentine's Day.

Here are some interesting **Valentine's Day fun facts**:

♥ About 1 billion Valentine's Day cards are exchanged in US each year. That's the largest seasonal card-sending occasion of the year, next to Christmas.

♥ About 3% of pet owners will give Valentine's Day gifts to their pets.



♥ Worldwide, over 50 million roses are given for Valentine's Day

[Refer A Friend, Boyfriend, Husband, you know... anyone you love.](#)



"Love is the strongest force the world possesses, and yet it is the humblest imaginable" [Mahatma Gandhi](#)

Thank you for showing your confidence in us through the referral of your friends, keep them coming!

[Click to send a referral email](#)

[Quick Links](#)

[Visit our web site](#)

each year.

[Email Us](#)



♥ Women are more actively involved in buying valentine greetings.
(What's up with that?)

♥ Valentine's Day and Mother's Day are the biggest holidays for giving flowers.

♥ The red rose was the favorite flower of **Venus**, the Roman goddess of love.

♥ Many believe the 'X' symbol became synonymous with the kiss in medieval times. People who couldn't write their names signed in front of a witness with an 'X.' The 'X' was then kissed to show their sincerity.

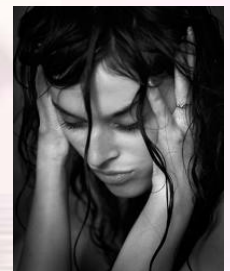
What is a Nightguard and how can it help?

Night guards come in different shapes and sizes, but essentially a night guard is a shell of hard plastic made from models of your teeth. The night guard is hard enough to be durable but it is softer than teeth and protects them from wear. A night guard protects your teeth and jaw from the detrimental effects of nighttime teeth grinding which lead to other more serious problems.



The forces created by grinding can eventually wear your teeth down to nothing! Other warning signs that you may be grinding your teeth at night include headaches (sometimes severe) and jaw pain when you wake up in the morning.

Studies have shown that 80% of people who clench their teeth have headaches! What this means is that 4 out of 5 people with headaches can benefit from a properly made Night guard.



So if you suffer from headaches (or even if you have been diagnosed as having Migraines) there is a very strong chance of relief from your headaches by having a night guard!

Monthly raffle winner: **Adrienne Ortega!**



You are our lucky patient that will now own a Waterpik (so maybe you can squirt your brother with it, or maybe let your parents borrow it), just make sure you come to pick it up, you have 30 days to claim your prize.

Have you heard about our...

*** Care Enough To Share Gift Certificates ***

For every friend, family member or co-worker that you refer to our office using our "Care Enough to Share Gift Certificate", you will receive

1.- 2 entries into our "Patient of the Month" drawing AND
2.- a \$25.00 dental credit or a \$25.00 gift card to some fabulous stores and
restaurants.

Check out what kind of special we got going on this month at [Platinum Dental February
Specials.](#)

Have a great day!
Platinum Dental Inc.

Platinum Dental Inc.: 555 S. Rancho Santa Fe Rd. Suite 100 - San Marcos, CA 92078
ph: 760-510-9009 - email: staff@platinumdental.com